

X 628-C

2.8-inch Fingerprint Time & Attendance Terminal



The firmware of X628-C has been upgraded to the New Firmware. It brings many new experiences, including the new stunning GUI, rock-solid stability, faster matching speed and better expandability.

Users can easily manage data by networking X628-C via RS232, TCP/IP, and USB-host. Most importantly, all the functions can still operate in a networking state. X628-C is compatibility with various types of USB flash disks, ADMS and former SDK. It also supports data backup and retrieve to avoid the risk of accidental deletion.

It promotes the fingerprint time & attendance management to the next level. You can get the best of benefits from the X628-C.

Feature

Remarkable user experience

- Intuitive and stunning UI designed with the most popular and internationalized factor.
- Interface operation adopts modularized hierarchical design. Simpler, Better and More logical.
- Faster matching speed: less than 0.5 second.

Excellent expandability

- Easy to extend functions and customize customers' demand.

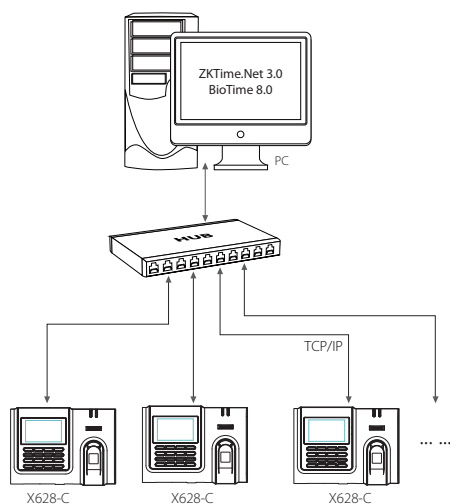
Enhanced features and performance

- User validity settings.
- Data backup and retrieve.
- Advanced User ID consisted of letters and numbers.
- Chip encryption for firmware protection.
- More flexible menu configuration: double line text display.
- Built-in Serial and Ethernet ports

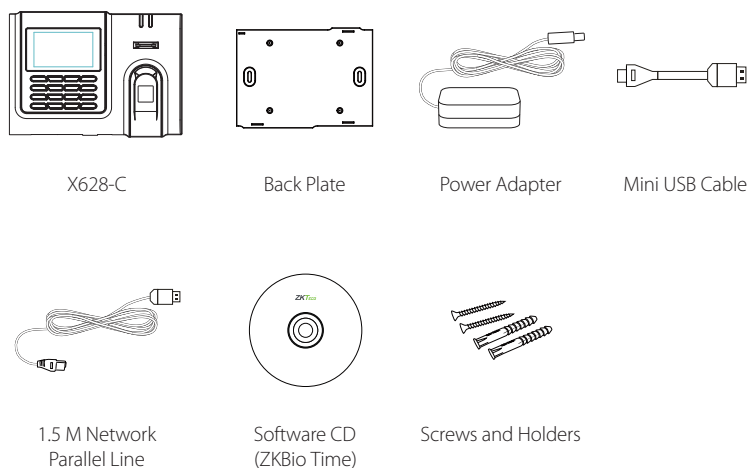
Specifications

Fingerprint Capacity	3000
Card Capacity	10,000 (Optional)
Record Capacity	100,000
Display	2.8-inch Screen
Communication	TCP/IP, USB-host, WiFi
Standard Functions	Workcode, SMS, DST, Schedule Bell, Self-Service Query, Automatic Status Switch 9-digit User ID
Optional Functions	Photo ID,ADMS, ID / IC / HID, Webserver, External Printer and Bell, WiFi, Multiple Verify Modes
Software	ZKTime. Net, ZKBio Time
Power Supply	DC 5V 0.8A
Verification Speed	≤ 1 Sec.
Operating Temp.	0 °C- 45 °C
Operating Humidity	20%-80%
Dimension	190 × 135.8 × 51.5mm (Length × Width × Thickness)
Net Weight	0.9 kg

Configuration



What's in the Box



ZKTeco Inc.

ZK Mansion, Wuhe Rd, Gangtou, Bantian, Buji Town,
Longgang District, Shenzhen China 518129
Tel: 86-755-8960 2345/46/47/48
E-mail: sales@zkteco.com
www.zkteco.com

Global Offices:

USA: + 1 732-412-6007
EU: +34 916532891
Brazil: +55 31 2515-8326
Thailand: +66-027199154
Mexico: +52-55-52928418

South Africa: +27 12 259 1047
Egypt: +201110444134
Dubai: +971 4 6091 310
India: +91 8123536788
Indonesia: +62 21 2921 8949

Vietnam : +84-0169-5813007
Philippines: +63 9084118832
Russia: +8 915 178-46-81

